








-  Compact wall-hung design
-  Possibly the smallest full sized peripheral pump operated pressurisation unit in the UK
-  All mechanical connections exit the base. Electrical connections on either side.
-  Pump anti-seize pulse feature
-  Cat 5 protection

### INTRODUCTION

The Micro-S is a compact single pump, single system, electronically controlled pressurisation unit.

Designed for use on heating or chilled water systems up to and including 2.8 Bar cold fill pressures.

All mounted in a fully enclosed, sturdy 1.5mm mild steel fully powder coated cabinet.

The unit is designed for ease of installation with all mechanical connections being terminated on the underside and all electrical connections on either side to suit site requirements.

### SYSTEM CONNECTIONS

- 1/2" BSPM connection to float valve(s)
- 1/2" BSPF connection to system
- 3/4" compression overflow connection

### VESSELS

A Full range of replaceable bag/diaphragm expansion vessels are available to suit all systems.

Range: from 3 to 1000 ltr. (rated at 99°C & 10bar).

### ELECTRICAL

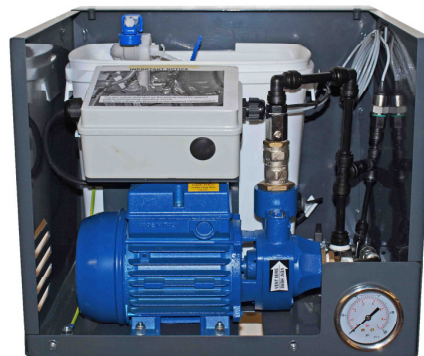
- Motor: Totally enclosed fan cooled
- Electrical supply: 240 a.c. single phase
- 0.37 kW / 2.5 amps FLC continuously rated
- Motor insulation: IP44 Class F

### PIPEWORK

Suction & discharge internal pipe-work complete with double check valves and twin isolation valves.

### BREAK TANK

1 No. 10 litre polypropylene tank with 1/2" float valve and a 22mm compression overflow connection. Complete with AB air gap providing category 5 protection.



### PUMP

Constructed of a cast iron body with stainless trim, stainless steel shaft with a brass impellor. The pump incorporates a self-adjusting mechanical seal.

### CONTROLS

All within the integral enclosure, the controls feature :-

#### Electronic Controls for:-

- Pump control
- High pressure alarm
- Low pressure alarm
- Daily anti-seize pump pulse
- Low water level

#### Alarms for:-

- Low Pressure
- High pressure

#### Volt free contacts for:-

- Low pressure
- High pressure

#### Gauge for:-

- System pressure

### DIMENSIONS / WEIGHT

Dimensions (mm): 385w x 345d x 315h  
Weight (kg.): 18 (dry) / 28 (wet)